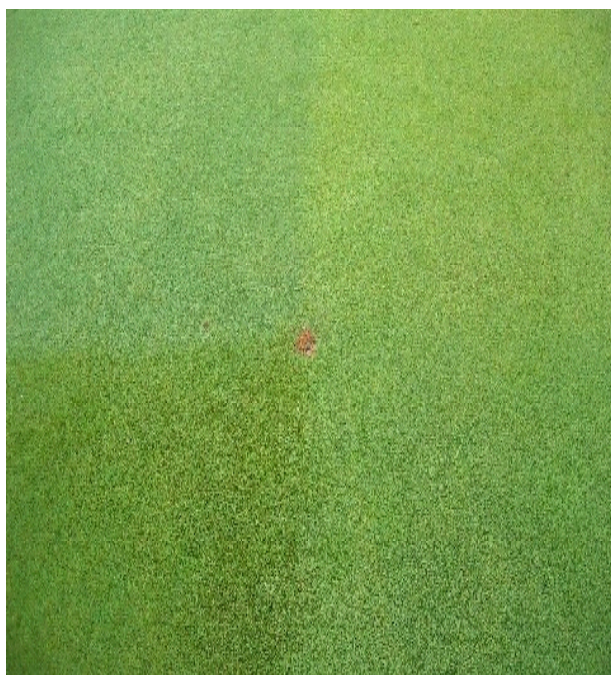


Bentgrass Selection: Choosing the Right Varieties



Variability in bentgrass colors and textures

Turfgrass breeders have greatly improved turf quality, heat stress tolerance, competitiveness with *Poa annua*, low mowing adaptation and disease resistance of creeping bentgrass. It has now become more important than ever to upgrade turf of older bentgrass varieties, thin, damaged or worn areas, or bent turf contaminated with *Poa annua* with newer, more improved varieties. Whether for overseeding to thicken existing turf, or for conversion to newer genetics, PICKSEED's Futura Fairway and Futura Greens creeping bentgrass seed blends are perfect examples of elite seed blends composed of the newest and best varieties.

Most new varieties of creeping bentgrass trace from only three genetic sources. They are: Penn State University, Texas A&M University and Rutgers University. When choosing a seed blend, try to include improved types from two or more of these sources. Both Futura Fairway and Futura Greens blends are composed of

elite varieties from Rutgers and Texas A&M. Cato, Mariner and Ninety-Six Two were developed at Texas A&M and MacKenzie traces from Rutgers germplasm.

It is also important to choose varieties that are broadly adapted and will blend in with the existing turf, whether mostly bentgrass or a bentgrass and *Poa annua* mix. Try to match color, texture and density. Do not overseed an averagely dense, moderately green bentgrass stand with super dense types like the "A" and "G" varieties or with varieties with a very dark green color. Both Futura Fairway and Futura Greens are composed of modern elite varieties with moderate color, texture and density so that they can be used in many situations and will blend in with the existing turf.

Both Futura Greens and Futura Fairway can be depended upon to provide superior varieties for overseeding or conversion in areas wherever bentgrass is adapted and used. These elite blends, when seeded or overseeded correctly (please closely follow directions provided in related Pickseed technical reports) will provide years of high quality creeping bentgrass turf.



Dr. Jerry Pepin